

# One Octave Scale Study

## Clarinet

### Concert B Flat (C)

How many flats are in the key signature?

List the flats in the order they appear in the key signature.

Write in the note names (including flats/sharps) above or below the notes.

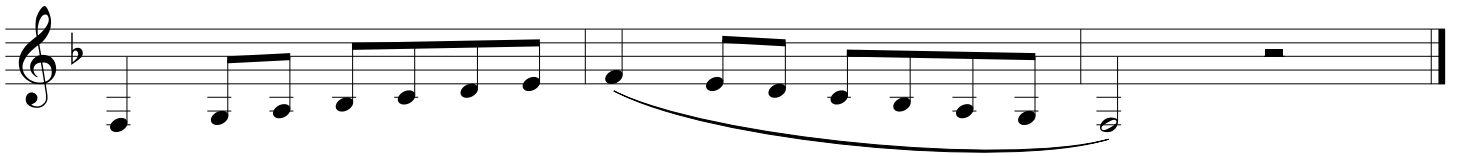


### Concert E Flat (F)

How many flats are in the key signature?

List the flats in the order they appear in the key signature.

Write in the note names (including flats/sharps) above or below the notes.

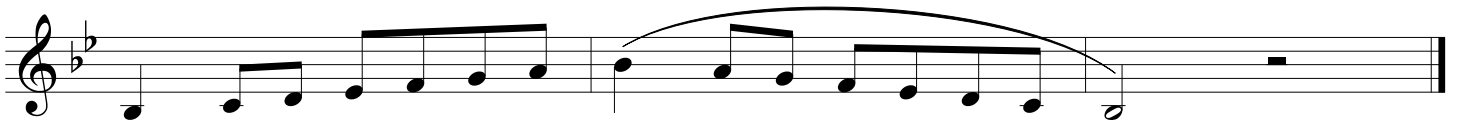


### Concert A Flat (B Flat)

How many flats are in the key signature?

List the flats in the order they appear in the key signature.

Write in the note names (including flats/sharps) above or below the notes.



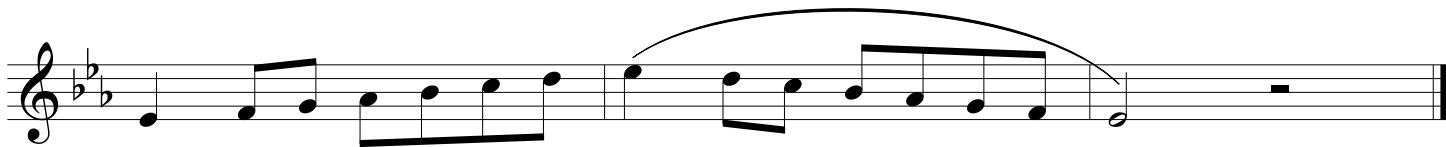
# Clarinet

## Concert D Flat (E Flat)

How many flats are in the key signature?

List the flats in the order they appear in the key signature.

Write in the note names (including flats/sharps) above or below the notes.

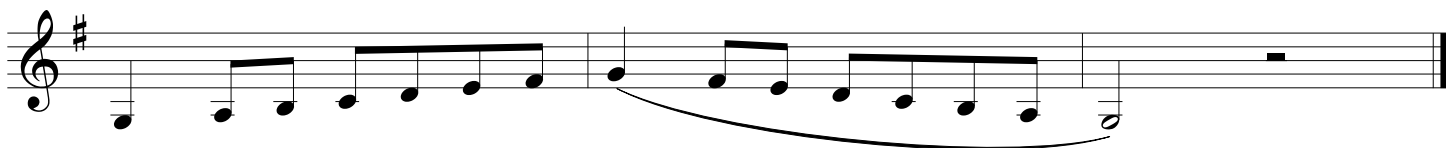


## Concert F (G)

How many sharps are in the key signature?

List the sharps in the order they appear in the key signature.

Write in the note names (including flats/sharps) above or below the notes.



## Concert C (D)

How many sharps are in the key signature?

List the sharps in the order they appear in the key signature.

Write in the note names (including flats/sharp) above or below the notes.



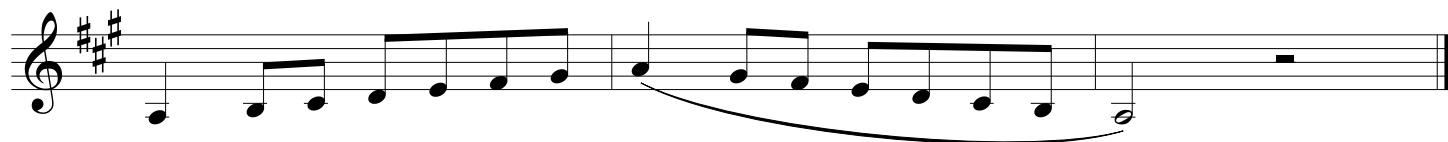
# Clarinet

## Concert G (A)

How many sharps are in the key signature?

List the sharps in the order they appear in the key signature.

Write in the note names (including flats/sharps) above or below the notes.



## Chromatic Scale

A "sharp" raises the pitch of a note and a "flat" lowers the pitch of a note. When you see a chromatic scale ascending, it will be written using sharps. When you see a chromatic scale descending, it will be written using flats. It is important that you are comfortable recognizing both sharp and flat notes.

Write in the note names (including flats/sharps) above or below the notes.

